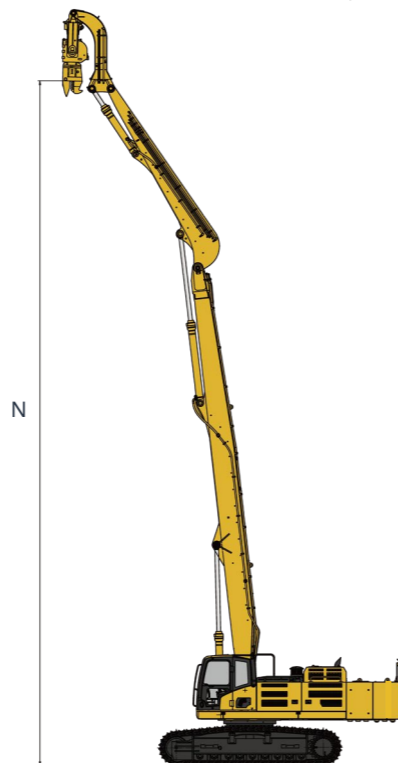
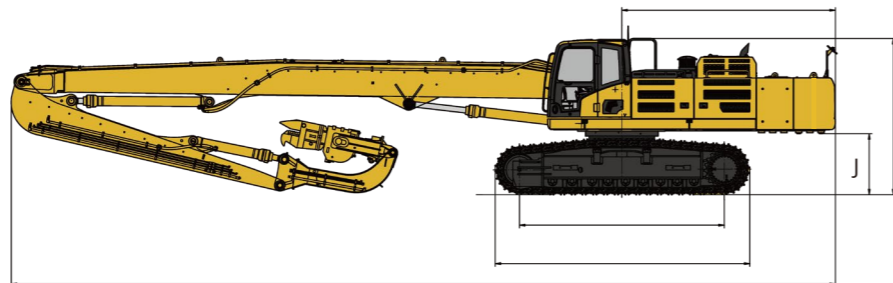
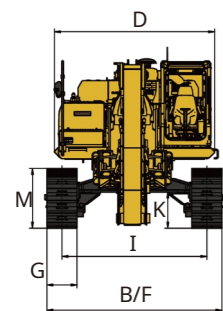


### Dimensions



A Total length (mm)	13660	13750	17800
B Overall width (mm)	3200	3200	3360
C Total height (mm)	3205	3300	3365
D Turntable width (mm)	3045	3190	3190
E Track length (mm)	4935	5045	5495
F Track width (mm)	3200	3200	3360
G Track shoe width (mm)	600	600	600
H Track wheelbase (mm)	4030	4080	4414
I Track gauge (mm)	4030	2600	2760
J Counterweight ground clearance (mm)	1185	1340	1315
K Minimum ground clearance (mm)	530	565	600
L Tail minimum turning radius (mm)	3975	4065	4600
M Track height (mm)	924	1140	1105
N Maximum pile driving height (mm)	15100	15200	19000

Our products are constantly being updated. If the product appearance and technical parameters in the brochure are different from the actual product, please refer to the actual product. We reserve the final rights.

# SHANTUI

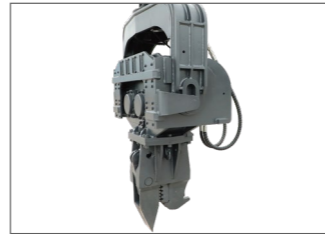
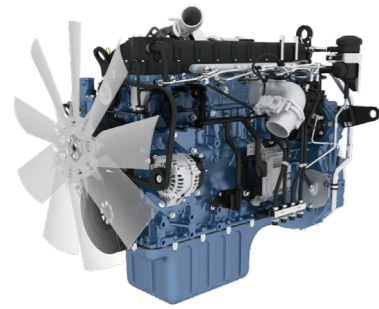
## Pile Driver

# SHANTUI



### SE400DP/SE450DP/SE600DP





## 1 Efficient operation

- Shantui's special high-power engine has the largest power in the same tonnage and is more suitable for tough Geology, higher operating efficiency.
- The large-diameter cylinder is used, and the bending arm cylinder is one size larger than the same level, which is convenient for pile driving and pulling. The pile is more powerful, greatly improving work efficiency.

## 2 Stable and reliable

- Shantui customized hydraulic vibratory hammer, high-quality shock-absorbing pad, stable performance, vibration Strong force and high reliability.

## 3 Design

Fast, multi-function handle, comfortable and safe operation

disk, more stable and safe.

It can increase the storage function.

It meets different operating habits and is more user-friendly.



## 4 Working conditions

It can meet the working conditions of 6-18m steel sheet piles and casing piles.



Different pile hammers are configured according to different pile types, including U-shaped steel sheet piles, Z-shaped steel sheet piles, H-shaped steel sheet piles, extra-wide steel sheet piles, straight-type steel sheet piles,

Steel sheet piles, cement pipe piles, cement square piles, steel pipe piles, concrete sheet piles, lightweight steel sheet piles, etc.

model		SE400DP	SE450DP	SE600DP
weight	Weight (kg)	39000	43000	59000
	Engine Model	Weichai WP7	Cummins QSL9 / Weichai WP10H	Cummins QSM11 / Weichai WP13H
engine	Direct Injection	√	√	√
	4-stroke	√	√	√
	Water Cooling	√	√	√
	Turbocharger	√	√	√
	Air to air cooling	√	√	√
	Number of cylinders	6	6	6
	Engine output power (KW/rpm)	199/2000	214/2100, 247/2000	280/2000, 316/1900
	Displacement (L)	7.47	8.9/9.5	10.8/12.9
	Excitation force (recommended) (kN)	435	525	610
	Eccentric moment (recommended) (kg.m)	5.8	6	7
Main performance	Walking speed (kg/h)	3.3/3.5	3.0/4.9	3.3/5.6
	Rotation speed (r/min)	10	10.5	9
	Climbing ability (°)	35	35	35
	Ground pressure ratio (kPa)	60	68.3	84
	Maximum traction force (kN)	267	315	364
	Main pump	2 piston pumps	2 piston pumps	2 piston pumps
	Main pump rated flow (L/min)	2X300	2X300	2X392
Hydraulic system	Main safety valve pressure (MPa)	34.3/37	34.3/37	34.3/37
	Travel system pressure (MPa)	34.3	34.3	34.3
	Swing system pressure (MPa)	26.5	26.5	26.9
	Pilot system pressure (MPa)	3.9	3.9	3.9
	Fuel tank capacity (L)	620	620	670
	Hydraulic oil tank/system capacity (L)	300/420	300/420	300/460
Oil capacity	Engine oil capacity (L)	twenty four	28	35
	Boom length (mm)	9500	9500	13000
Standard	Arm length (mm)	4000	4000	6000